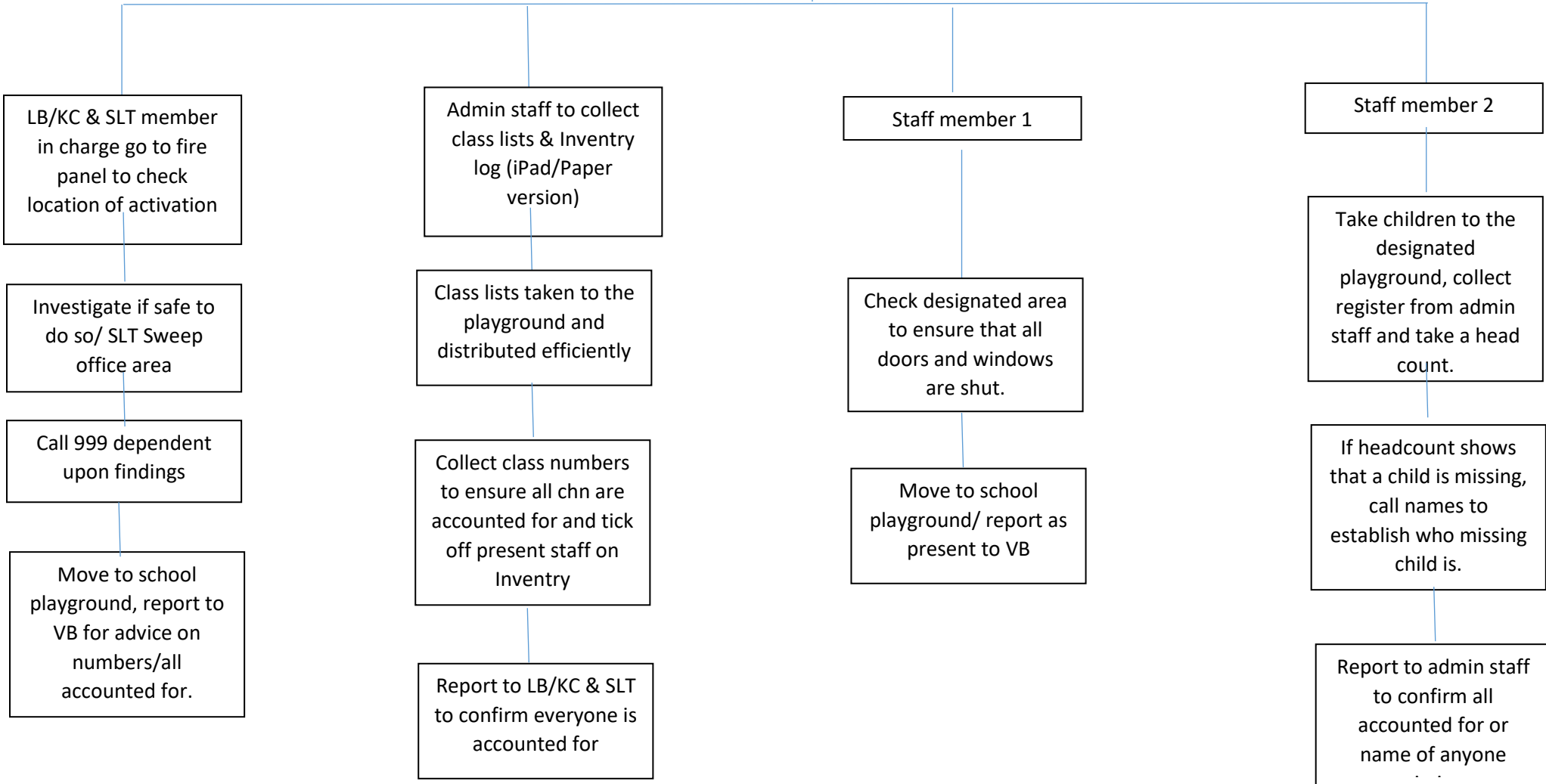


Fire Evacuation Action Plan

Fire Alarm Activates

Each keyworker bubble has two members of designated staff. If a staff member is not a trained fire marshal, they can sweep and check an area but **MUST NOT** attempt to put out a fire.



Target time for evacuation: 3 minutes

Please note: Never go back in the building!

Fire Evacuation points

COVID ADDENDUM: Due to the COVID19 restrictions we must attempt to make class lines with a metre distance between classes. In order to minimise contact we aim for any fire practice sessions to take less than 15 minutes in total. In the case of a real alarm, the safety of our children must take precedence over social distancing measures.

